



HVAC Product Catalogue

Edition 1

CoverGuard
ADJUSTABLE AIR CONDITIONING DUCT

QUICKFITTING®
HVAC



CoverGuard

ADJUSTABLE AIR CONDITIONING DUCT

3-Stage Adjustability: Designed to accommodate multiple zone pair coil, with the flexibility to expand from 50mm to 100mm deep, ensuring a perfect fit for a variety of installations.

UV Stabilized & Temperature Resistant: Tested to withstand temperatures ranging from -20°C to 60°C, ensuring durability in diverse conditions.

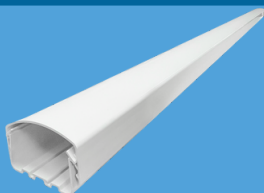
Quick Snap Cover: Engineered to stay securely in place, even under pressure, for reliable protection.

Easy Lock Adjustable Fittings: Open and close as needed for seamless system adjustments at any time, providing ultimate convenience.

Durable Cam Screws: Constructed from hardened plastic, these quarter turn cam screws will never rust, offering long-lasting performance.

Versatile Design: Available in standard white, and paintable to match any installation environment.

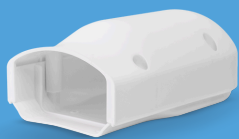
Pre-installed zip-tie clips: Free-sliding zip-tie clips are pre-installed, relocating quickly and easily to position the zip tie where it's needed most.



Product Code: 3CGDUC78
Description: 1900mm Ducting
Colour: White
Size: 80mm - Adjustable Height

Carton Qty

6



Product Code: 3CGINLT
Description: Wall Inlet
Colour: White
Size: 80mm - Adjustable Height

Carton Qty

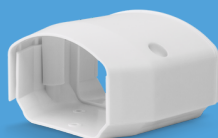
12



Product Code: 3CGSTI
Description: Soffit Inlet
Colour: White
Size: 80mm - Adjustable Height

Carton Qty

12



Product Code: 3CGEND
Description: End Fitting
Colour: White
Size: 80mm - Adjustable Height

Carton Qty

12



For more information on our product limited warranty, visit www.globelink.co.nz



CoverGuard

ADJUSTABLE AIR CONDITIONING DUCT



Product Code: 3CGINT90
Description: 90 Inside Vertical Elbow
Colour: White
Size: 80mm - Adjustable Height

Carton Qty
12



Product Code: 3CGEXT90
Description: 90 Outside Vertical Elbow
Colour: White
Size: 80mm - Adjustable Height

Carton Qty
12



Product Code: 3CG90
Description: 90 Flat Elbow
Colour: White
Size: 80mm - Adjustable Height

Carton Qty
12



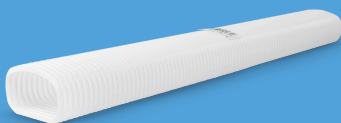
Product Code: 3CG45
Description: 45 Flat Elbow
Colour: White
Size: 80mm - Adjustable Height

Carton Qty
12



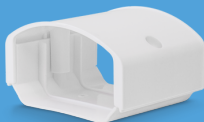
Product Code: 3CG90SWP
Description: 90 Sweep Elbow
Colour: White
Size: 80mm - Adjustable Height

Carton Qty
12



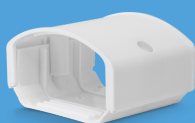
Product Code: 3CGFLXSM
Description: Flexible Bend Small - 600mm
Colour: White
Size: 80mm

Carton Qty
12



Product Code: 3CGCUP
Description: Coupler
Colour: White
Size: 80mm - Adjustable Height

Carton Qty
12



Product Code: 3CGFLXA
Description: Flexible Adaptor
Colour: White
Size: 80mm - Adjustable Height

Carton Qty
12



For more information on our product limited warranty, visit www.globelink.co.nz



CoverGuard

ADJUSTABLE AIR CONDITIONING DUCT



Product Code: 13175
Description: 16mm Flexible Drain Hose
Colour: Ivory - UV Resistant
Size: 16mm x 50m (dispenser box)

Carton Qty

1



Product Code: 13172
Description: AC Roof Bracket
Colour: Powder Coated White
Size: 1000mm Load Rating: 200(kg)

Carton Qty

4



Product Code: 13170
Description: AC Bracket 450
Colour: Powder Coated White
Size: 450mm Load Rating: 100(kg)

Carton Qty

6



Product Code: 13171
Description: AC Bracket 550
Colour: Powder Coated White
Size: 550mm Load Rating: 150(kg)

Carton Qty

4



Product Code: 13181
Description: PVC AC Feet - 1 Pair
Colour: White
Size: 450mm Load Rating: 200(kg)

Carton Qty

12 Pairs



Product Code: 13179
Description: Rubber Anti Vibration AC mount
Colour: Black
Size: 48mm x 108mm x 69mm - 50(kg) per mount

4 Pack



For more information on our product limited warranty, visit www.globelink.co.nz



QUICKFITTING[®]

HVAC



CONNECT REFRIGERANT LINES IN SECONDS

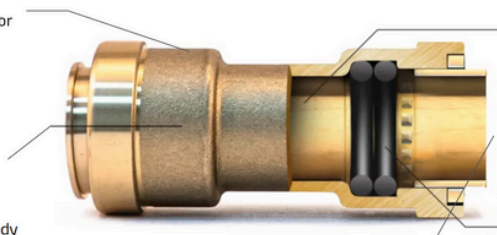
WHY PUSH-TO-CONNECT?

UL CERTIFIED

Approved for major refrigerants, including A2L refrigerants

DURABLE

Heavy duty, corrosion and UV resistant brass body



LEAK-RESISTANT

Prevents connection leaks caused by galling, vibration, pulsation and extreme temperature changes

PATENTED DESIGN

Double O-ring and grip ring seal ensures leak-proof connections

REMOVABLE

Quickly and easily disconnects with release tool

Approved Refrigerants

R22, R32, R134a, R290, R404a, R407a, R407c, R410a, R500, R600a

A2L Class: R452B, R454B



Socket



Coupler



Coupling Reducer



90 Degree Elbow



Remove Tool

Part Number	Product Description	Box Quantity
HV-SC-0250	1/4" HVAC Push to Connect Coupling	10
HV-SC-0375	3/8" HVAC Push to Connect Coupling	10
HV-SC-0500	1/2" HVAC Push to Connect Coupling	10
HV-SC-0625	5/8" HVAC Push to Connect Coupling	10
HV-FA-0250	1/4" HVAC Push to Connect Socket	10
HV-FA-0375	3/8" HVAC Push to Connect Socket	10
HV-FA-0500	1/2" HVAC Push to Connect Socket	10
HV-FA-0625	5/8" HVAC Push to Connect Socket	10
HV-CR-375250	3/8" X 1/4" HVAC Push to Connect Coupling Reducer	10
HV-CR-500375	1/2" X 3/8" HVAC Push to Connect Coupling Reducer	10
HV-SE-0250	1/4" HVAC Push to Connect 90 Degree Elbow	10
HV-SE-0375	3/8" HVAC Push to Connect 90 Degree Elbow	10
HV-SE-0500	1/2" HVAC Push to Connect 90 Degree Elbow	10
HV-RTMT2562K	1/4"-5/8" Set of 4 removal tools - 1 of each size	10

Approved Applications

- Residential and commercial use
- Copper and coated aluminum line sets
- Mini-split HVAC units

Maximum Rated Pressure

- 870 psi / 60 bar



OVERBUILT, NOT OVERPRICED

Client Details

Date:

Name:

Address:

Phone:

Email:

Kw's Required:_____

A grid of 20 columns and 30 rows of small black dots on a white background. The dots are arranged in a regular, repeating pattern, forming a rectangular grid. Each dot is a small, solid black circle, and they are spaced evenly both horizontally and vertically. The grid covers the entire area of the image, with no margins or additional elements.

Client Details

Date:

Name:

Address:

Phone:

Email:

Kw's Required:_____

This image shows a full page of dot grid paper. The background is white, and it is covered with a regular pattern of small, solid black dots. The dots are arranged in straight horizontal and vertical rows, creating a grid-like appearance. There are no margins, text, or other markings on the page.



Globelink is a Division of Electrical Supply Corp

www.globelink.co.nz sales@globelink.co.nz 0800 500 508