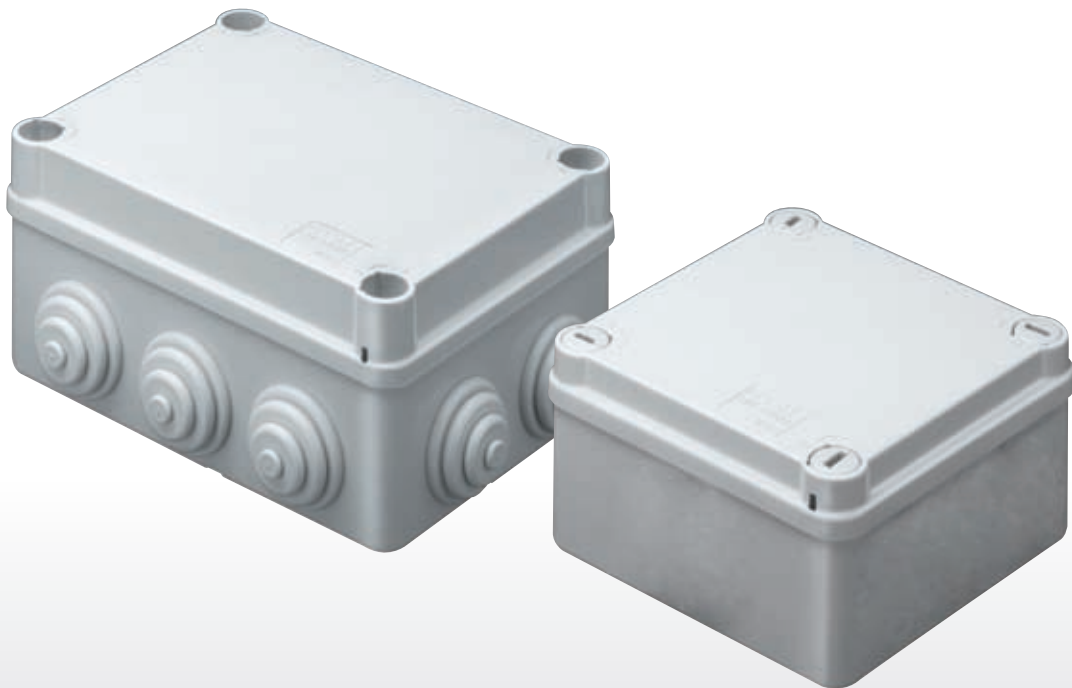


# 44 CE Range

## Technopolymer surface-mounting watertight junction boxes



The most complete range of surface-mounting watertight junction boxes in technopolymer.

- 3 different types of self-extinguishing materials including 2 halogen-free materials;
- 3 protection classes: IP44, IP55, IP56;
- 11 sizes available in 2 versions:  
with smooth walls or with stepped glands;
- 6 types of lids: blank/transparent, high/low, press-on/with screw (in plastic, also 1/4 turn, or in metal).

IMQ label products and RINA label versions.

# 44 CE RANGE

TECHNOPOLYMER SURFACE MOUNTING WATERTIGHT JUNCTION BOXES



## 44 CE RANGE - SURFACE-MOUNTING JUNCTION BOXES

Heat resistance		GW PLAST 75 (TP 85°C)					GW PLAST 120 (TP 120°C)		
Fire resistance		GWT 650°C - UL 94 : HB <span style="color: green;">■</span> GWT 960°C - UL 94: VO <span style="color: orange;">■</span>					GWT 650° C - UL 94 : HB <span style="color: green;">■</span>		
Characteristics		IP 44 with cable entries	IP 55 1/4 turn with cable entries	IP 55 1/4 turn with smooth walls	IP 55 with cable entries	IP 56 with smooth walls	IP 56 smooth walls blank cover	IP 56 smooth walls transparent cover	
BOX BASE DIMENSIONS	Dimensions (mm)								
	Ø 65	shallow	GW 44 001 <span style="color: orange;">GW 44 051</span> <span style="color: red;">GW 44 051R</span>						
	Ø 80	shallow	GW 44 002 <span style="color: orange;">GW 44 052</span>						
	80 x 80	shallow	GW 44 003 <span style="color: orange;">GW 44 053</span> <span style="color: red;">GW 44 053R</span>						
	100 x 100	shallow		GW 44 024 <span style="color: orange;">GW 44 054</span> <span style="color: red;">GW 44 054R</span>	<b>GW 44 234</b>	GW 44 004	<b>GW 44 204</b> <span style="color: orange;">GW 44 274</span>	<b>GW 44 404</b>	
		deep					<b>GW 44 214</b> <span style="color: orange;">GW 44 254</span>	<b>GW 44 414</b>	
	120 x 80	shallow				GW 44 005 <span style="color: orange;">GW 44 055</span>	<b>GW 44 205</b> <span style="color: orange;">GW 44 275</span>	<b>GW 44 405</b>	
		deep					<b>GW 44 215</b> <span style="color: orange;">GW 44 255</span>	<b>GW 44 415</b>	
	150 x 110	shallow		GW 44 026 <span style="color: orange;">GW 44 056</span> <span style="color: red;">GW 44 056R</span>	<b>GW 44 236</b>	GW 44 006	<b>GW 44 206</b> <span style="color: orange;">GW 44 276</span>	<b>GW 44 406</b>	<b>GW 44 426</b>
		deep					<b>GW 44 216</b> <span style="color: orange;">GW 44 256</span>	<b>GW 44 416</b>	<b>GW 44 436</b>
	190 x 140	shallow				GW 44 007 <span style="color: orange;">GW 44 057</span>	<b>GW 44 207</b> <span style="color: orange;">GW 44 277</span>	<b>GW 44 407</b>	<b>GW 44 427</b>
		deep					<b>GW 44 217</b> <span style="color: orange;">GW 44 257</span>	<b>GW 44 417</b>	<b>GW 44 437</b>
	240 x 190	shallow				GW 44 008 <span style="color: orange;">GW 44 058</span>	<b>GW 44 208</b> <span style="color: orange;">GW 44 278</span>	<b>GW 44 408</b>	<b>GW 44 428</b>
		deep					<b>GW 44 218</b> <span style="color: orange;">GW 44 258</span>	<b>GW 44 418</b>	<b>GW 44 438</b>
	300 x 220	shallow				GW 44 009 <span style="color: orange;">GW 44 059</span>	<b>GW 44 209</b> <span style="color: orange;">GW 44 279</span>	<b>GW 44 409</b>	<b>GW 44 429</b>
		deep					<b>GW 44 219</b> <span style="color: orange;">GW 44 259</span>	<b>GW 44 419</b>	<b>GW 44 439</b>
	380 x 300	shallow				GW 44 010 <span style="color: orange;">GW 44 060</span>	<b>GW 44 210</b> <span style="color: orange;">GW 44 280</span>	<b>GW 44 410</b>	<b>GW 44 430</b>
		deep					<b>GW 44 220</b> <span style="color: orange;">GW 44 260</span>	<b>GW 44 420</b>	<b>GW 44 440</b>
	460 x 380	shallow				GW 44 011 <span style="color: orange;">GW 44 061</span>	<b>GW 44 211</b> <span style="color: orange;">GW 44 281</span>	<b>GW 44 411</b>	<b>GW 44 431</b>
		deep					<b>GW 44 221</b> <span style="color: orange;">GW 44 261</span>	<b>GW 44 421</b>	<b>GW 44 441</b>

LEGEND: ■ GWT 650°C - UL94 : HB ■ GWT 960°C - UL94: VO

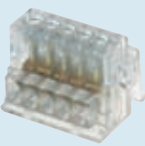







IN BOLD: versions with halogen-free material

IN RED: versions with red walls and a grey lid

# 44 CE RANGE

TECHNOPOLYMER SURFACE MOUNTING WATERTIGHT JUNCTION BOXES



		ACCESSORIES APPLICATION TABLE											
		BASE DIMENSIONS OF BOX (mm)											
		Code	Ø 65	Ø 80	80 x 80	100 x 100	120 x 80	150 x 110	190 x 140	240 x 190	300 x 220	380 x 300	460 x 380
ACCESSORIES FOR COUPLING AND JUNCTION SURFACE-MOUNTING BOXES	EQUIPOTENTIAL SINGLE-POLE TERMINAL BLOCKS 	GW 44 671	•	•	•	•	•	•	•	•	•	•	•
		GW 44 672		•	•	•	•	•	•	•	•	•	•
		GW 44 673				•		•	•	•	•	•	•
		GW 44 674						•	•	•	•	•	•
		GW 44 675						•	•	•	•	•	•
	GW 44 676						•	•	•	•	•	•	
	MULTIPLE TERMINAL BLOCKS 	GW 44 606	•	•	•	•	•						
		GW 44 607	•	•	•	•	•						
		GW 44 608	•	•	•	•	•						
	MULTIPLE FEEDTHROUGH TERMINAL BLOCKS 	GW 44 609		•	•	•	•	•	•	•	•	•	•
		GW 44 610											
		GW 44 611				•	•	•	•	•	•	•	•
		GW 44 612											
		GW 44 613							•	•	•	•	•
	GW 44 614												
	BACK-MOUNTING PLATES 	Galvanised sheet metal	GW 44 615						•				
			GW 44 616							•			
			GW 44 617								•		
			GW 44 618									•	
			GW 44 619										•
Insulating material 			GW 44 625						•				
			GW 44 626							•			
			GW 44 627								•		
			GW 44 628									•	
			GW 44 629										•
RACC.		GW 44 620								•	•	•	
SCREW CAPS 		GW 44 622	2	2	2	4	4	4	4	4			
		GW 44 623									6	supplied	
BRACKET 		GW 44 621						6	8	12	16	8	
CABLE ENTRIES 		GW 50 428											
		GW 50 429	4	4	6								
		GW 50 430				6	6	10					
		GW 50 431							10	12			
		GW 50 432									12	12	14

44 CE RANGE